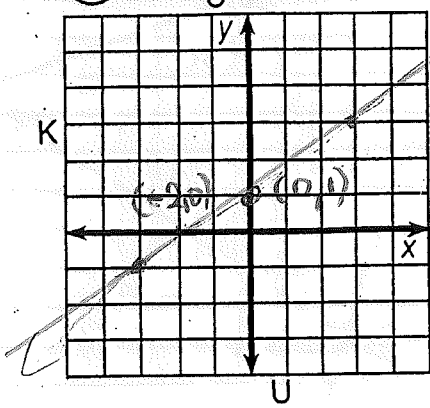


Whom Should You See at the Bank If You Need To Borrow Money?

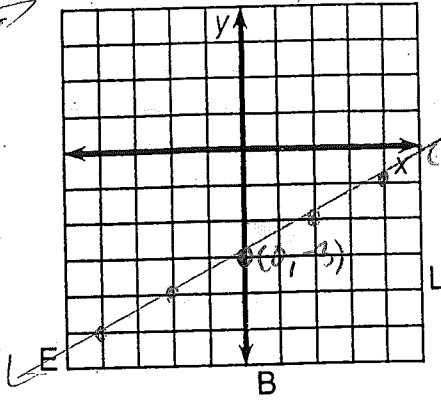
key

Use the slope and y-intercept to graph each equation below. The graph, if extended, will cross a letter. Print this letter in each box that contains the number of that exercise.

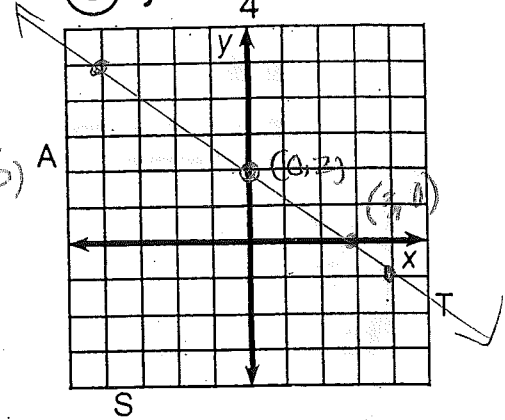
① $y = \frac{2}{3}x + 1$



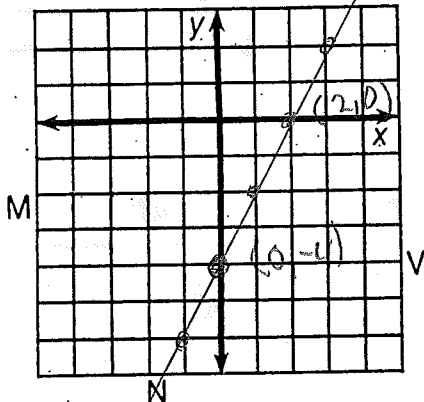
② $y = \frac{1}{2}x - 3$



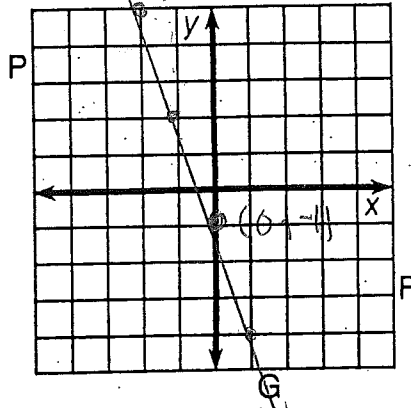
③ $y = -\frac{3}{4}x + 2$



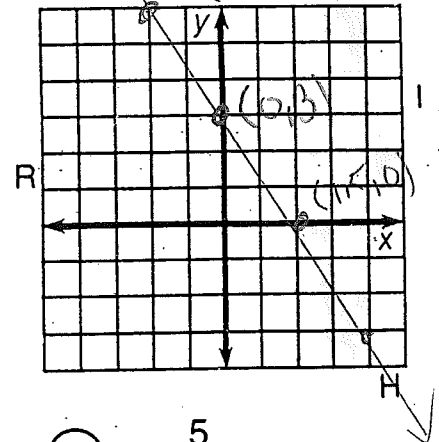
④ $y = 2x - 4$



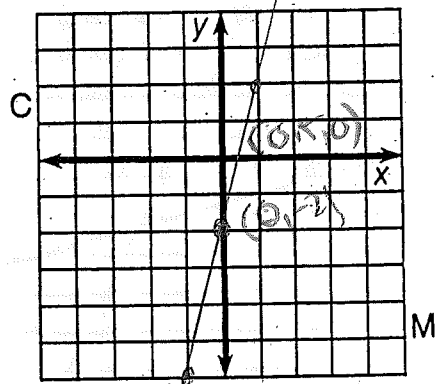
⑤ $y = -3x - 1$



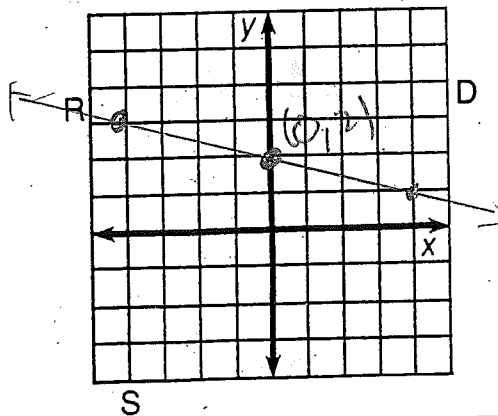
⑥ $y = -\frac{3}{2}x + 3$



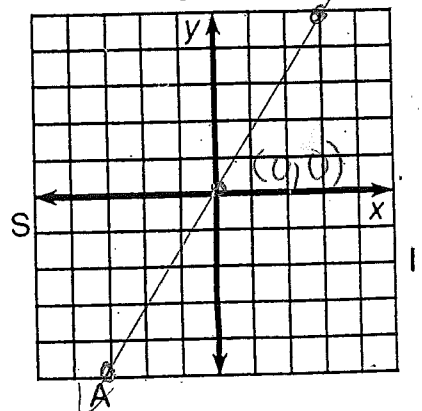
⑦ $y = 4x - 2$



⑧ $y = -\frac{1}{4}x + 2$



⑨ $y = \frac{5}{3}x$



3	6	2	7	1	9	4	9	8	8	9	4	5	2	8
T	H	E	L	O	A	N	A	R	R	A	N	G	E	R

GRAPHING LINEAR EQUATIONS

NAME: _____

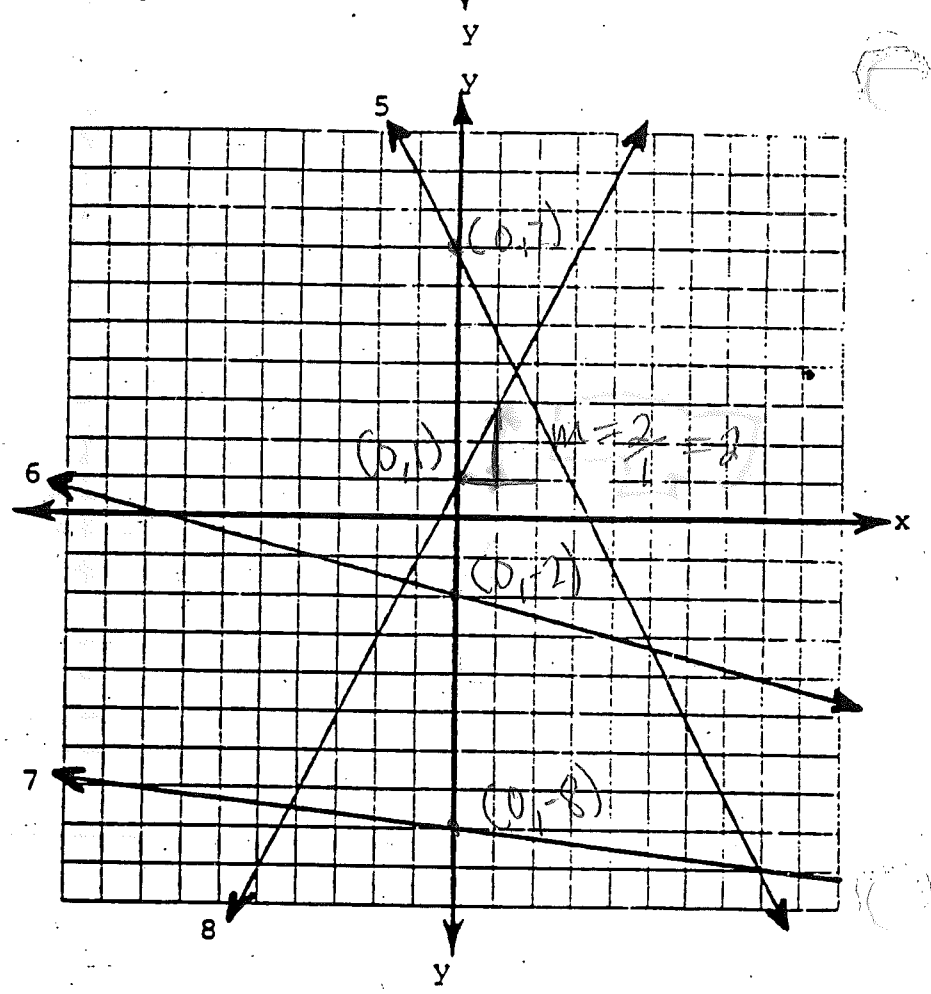
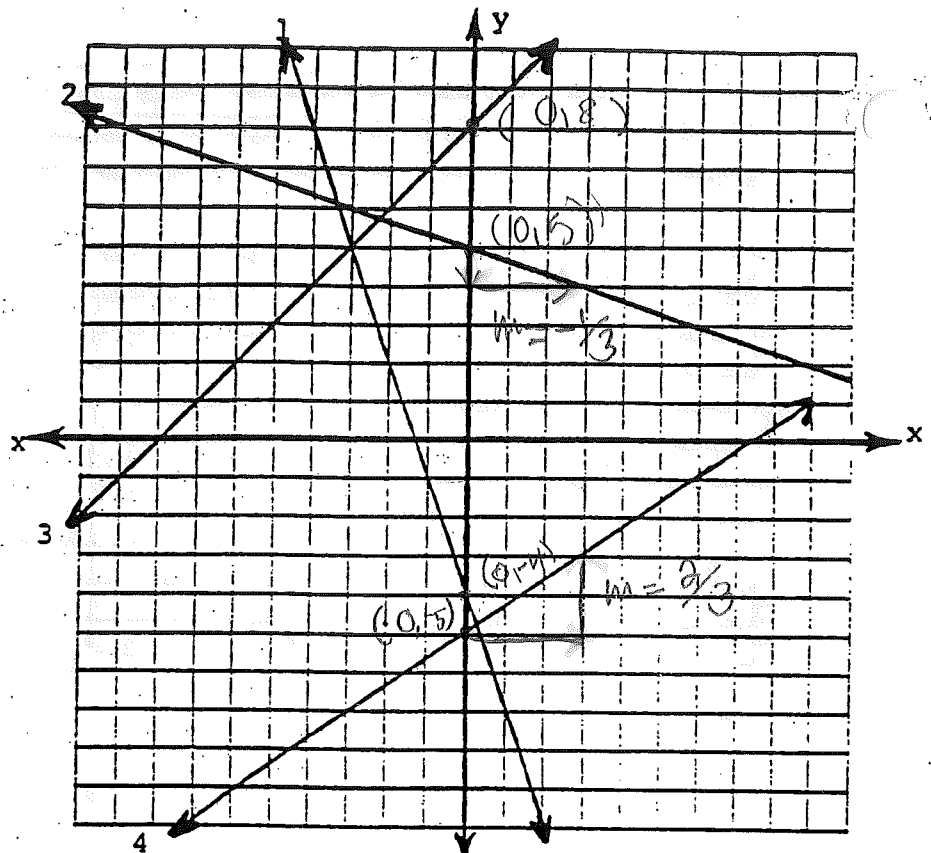
DATE: _____

EXERCISE:-

Find the equation for each line on the graphs to the right.

HINT:

Find the slope, m , and y -intercept, b



- ① $y = -3x - 4$
- ② $y = \frac{1}{3}x + 5$
- ③ $y = x + 8$
- ④ $y = \frac{2}{3}x - 5$
- ⑤ $y = -2x + 7$
- ⑥ $y = \frac{1}{4}x - 2$
- ⑦ $y = -\frac{1}{8}x - 8$
- ⑧ $y = 2x + 1$